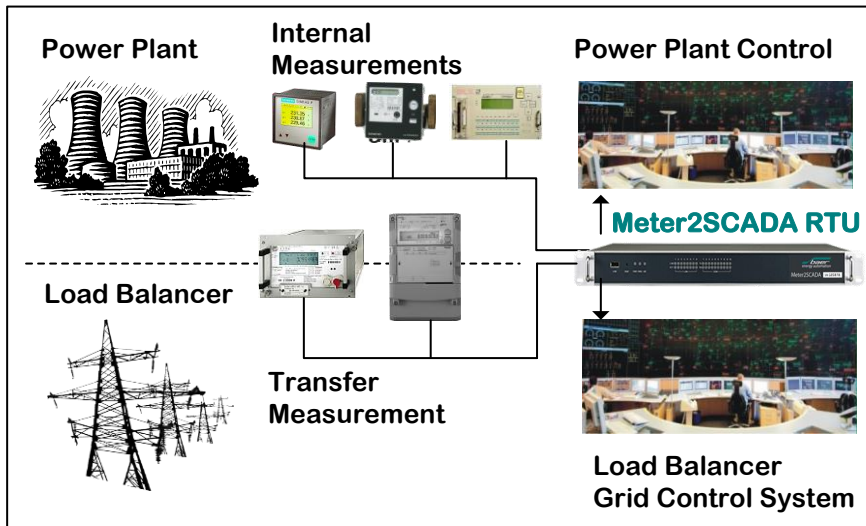


Meter data for the grid control system

Meter2SCADA

Meter2SCADA is the gateway between metering devices and solutions and SCADA systems for easy integration of meter data into control and process automation systems. It is available as a device with highly available hardware or as software (service) for MS Windows operating systems.



Supported metering protocols:

- IEC 1107, VDEW2 (IEC 62056-21)
- DLMS (IEC 62056-46-53-61-62)
- M-Bus (EN 13757-3)
- ModBus RTU/ASCII/TCP Master
- SML (MUC and SyM²)
- SCTM
- various manufacturer-specific protocols

Communication channels to measuring devices:

- point-to-point leased line
z.B. RS232/RS485/RS422/FO/MBus
- point-to-multipoint leased line
e.g. RS485/RS422/MBus
- Serial via TCP/IP (LAN and LTE fixed IP)
- LAN and LTE dynamic IP over IP-Telemetry (DIN 43863-4)

Interfaces to systems

superordinated:

- IEC 60870-5-101 Slave
- IEC 60870-5-104 Server
- ModBus RTU/ASCII/TCP Slave
- OPC DA Server
- M2S Link (Cascading)
- SQL Data Base Push
- File Export (optional with FTP automation)

subordinated:

- OPC DA Client
- M2S Link (Cascading)
- SQL Data Base Pull
- Data import (optional with FTP Automation)

Tools

- M2SConfig: remote configuration (via COM or TCP/IP)
- M2SMiniViewer: Real-time visualisation of process variables (via COM or TCP/IP)
- M2SComLog: Real-time tracking of data on serial and network interfaces
- Web interface with display of the process variables



- ▶ Use of the same data for billing and network management
- ▶ More measured variables for grid management
- ▶ For generation, transmission and distribution